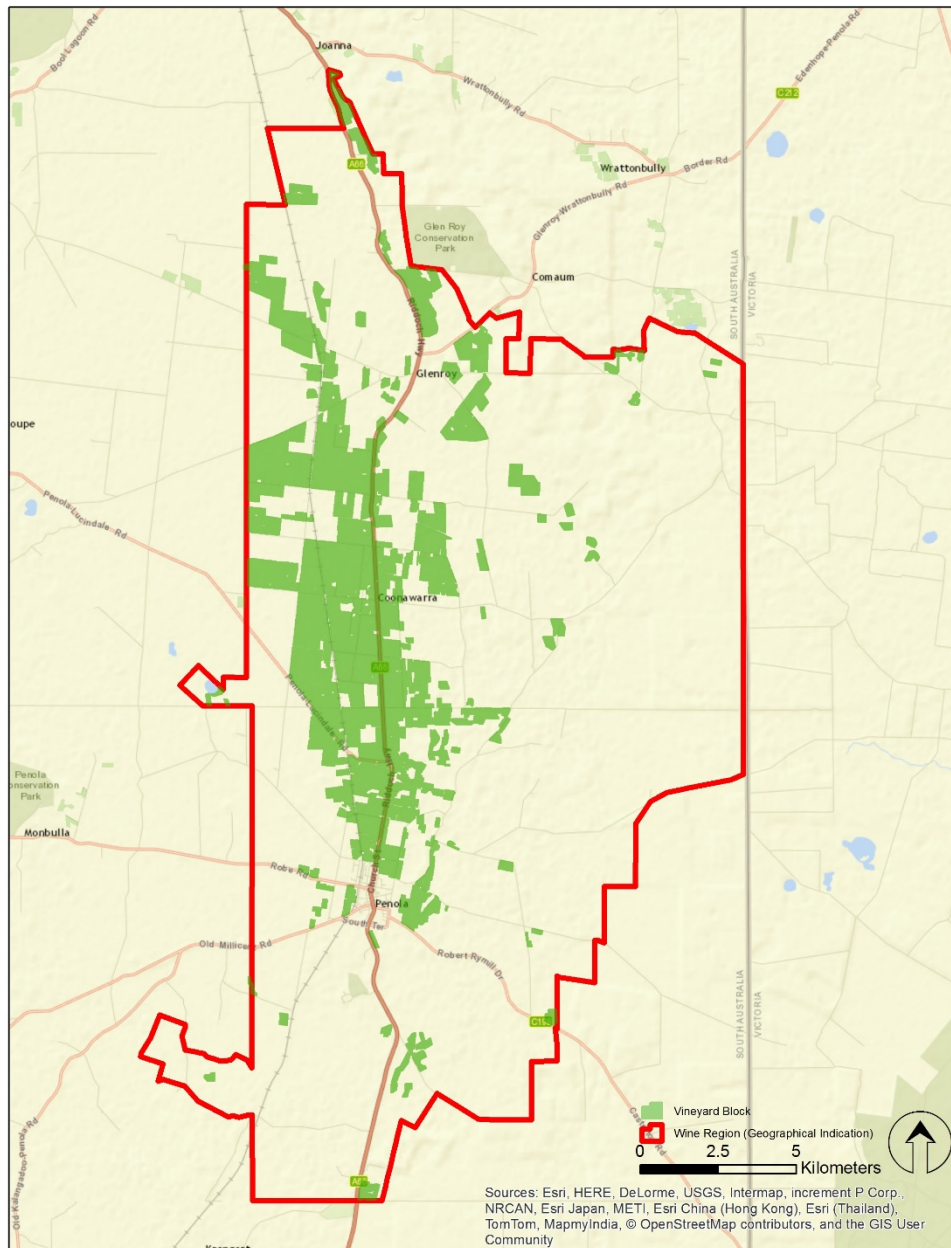


SA Winegrape Crush Survey 2019

Regional Summary Report

Coonawarra Wine Region

Wine Australia July 2019



DATUM: GDA94
PROJECTION: MGA Zone 54
DATE: 8th March 2017
SOFTWARE: ESRI ArcGIS v10.4
DATA SOURCE:
Vineyard Block - Vinehealth Australia
Wine Region - Wine Australia

**Coonawarra
Wine Region**



DISCLAIMER: Although every effort has been made to ensure the accuracy of the information displayed, Vinehealth make no representations, either express or implied, that the information displayed is accurate or fit for any purpose and expressly disclaims all liability for loss or damage arising from reliance upon the information displayed.

Coonawarra

Vintage overview

VINTAGE REPORT

All in all, Vintage 2019 for Coonawarra has been excellent.

Coonawarra received good winter rains leading into the growing season. This growing season has highlighted the importance of our good quality and quantity of underground water used to mitigate temperature and seasonal weather conditions. There has been no significant crop loss due to heat, and canopies remained in excellent condition through to the end of harvest; significantly benefiting from the typically cool nights created by the Southern Ocean.

Vintage timing was in line with the long-term average. Vintage 2019 commenced in Coonawarra in the last week of February with white wine varieties Sauvignon Blanc, Chardonnay and Riesling being picked through to late March. The whites are showing great natural acidity and complex flavours, Riesling and Chardonnay being the stand outs. Red wine varieties were harvested through April, with a small carry over into May.

A cool and dry April was perfect for ripening, allowing full flavour development and optimal sugar levels. Yields of red wine grapes were between average to slightly below the long-term average.

Shiraz and Cabernet Sauvignon are both highly rated by Coonawarra winemakers. Shiraz is showing bright fruits with high colour intensity. Cabernet is deep and rich in colour with great varietal definition and soft ripe tannins.

Coonawarra Vignerons Board (Coonawarra Grape and Wine Incorporated), May 2019

OVERVIEW OF VINTAGE STATISTICS

A total of 37,242 tonnes of Coonawarra winegrapes was reported to be crushed in 2019 – 25 per cent more than in 2018 and also above the 36,509 tonnes crushed in 2017.

There were 41 respondents to the survey who reported crushing grapes from Coonawarra in 2019 compared with 30 in 2018.

Over the past five years (2014-2018), the average crush of Coonawarra winegrapes has been 30,463 tonnes, making the 2019 crush 22 per cent above the average and the largest since 2008.

As a result of the higher tonnage, the total estimated value of winegrapes increased from \$45 million to \$54 million. There was a 7 per cent overall reduction in the average value of grapes, with Cabernet Sauvignon, which accounted for nearly 50 per cent of Coonawarra's crush, down by 2 per cent to \$1721 per tonne after a dramatic jump in 2018. Shiraz increased by 3 per cent to \$1458 per tonne and Chardonnay increased by 10 per cent to \$782 per tonne.

The price dispersion data shows that 57 per cent of red grapes were purchased at \$1500 or above, and 90 per cent of white grapes were purchased at between \$600 and \$1500 per tonne.

There were 21 hectares of new vines planted in Coonawarra in the 2018 growing season, after 9 hectares the previous year. Half were Cabernet Sauvignon and almost all were red varieties. The total area planted in Coonawarra declined by 92 hectares to 5726 hectares. This is very similar to what it was five years ago (5686 hectares in 2013).

Coonawarra

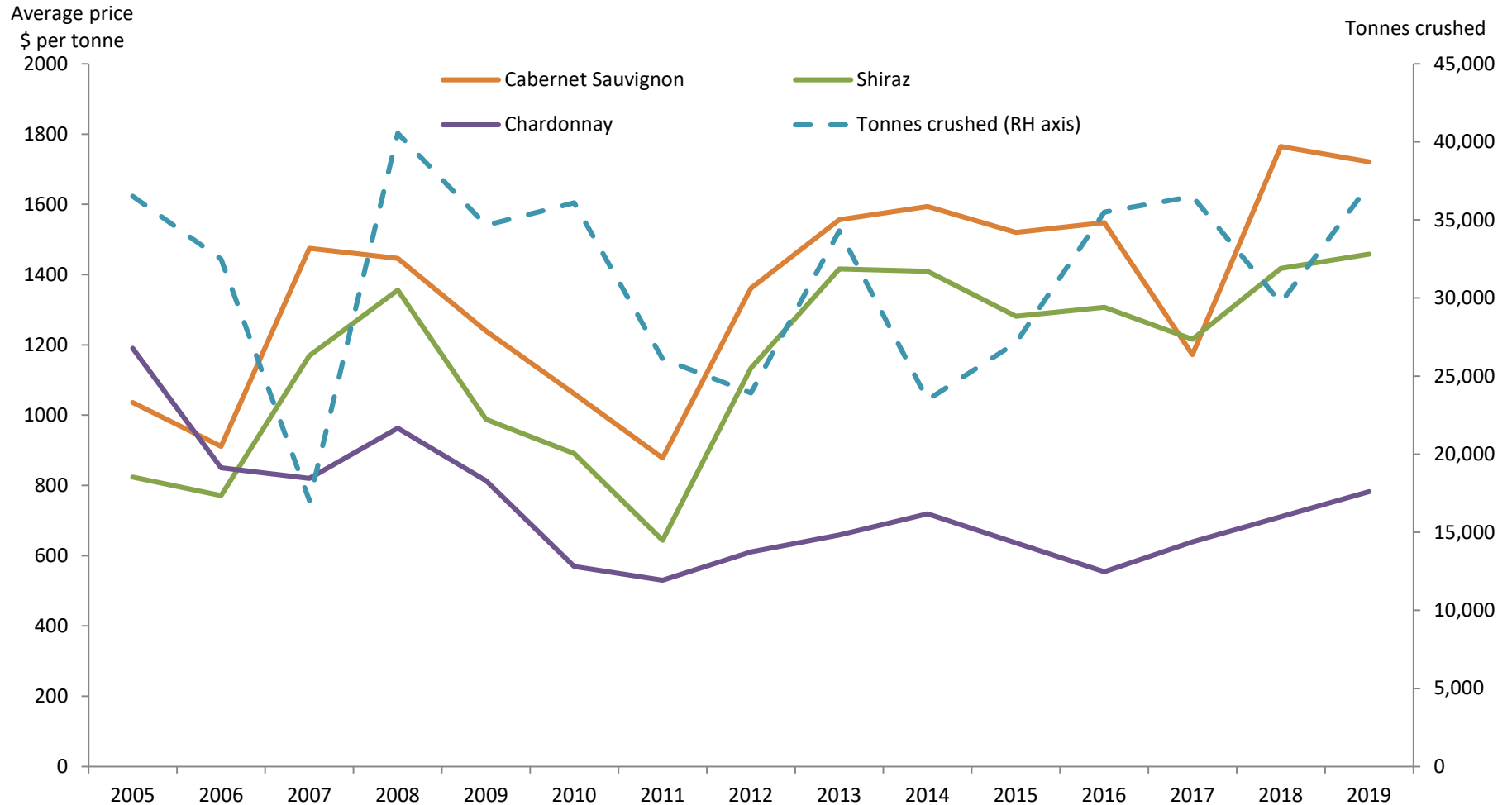
Winegrape intake summary table

	Total tonnes purchased	Price dispersion - number of tonnes in each price range					total value purchased grapes	Average purch. value per tonne	Change in price YoY	Winery grown fruit	Share of winery grown	Total crushed	Est total value ALL grapes
		< \$300	\$300 to <\$600	\$600 to <\$1500	\$1500 to <\$2000	\$2000+							
Red													
Barbera	8					8					0%	8	\$16,140
Cabernet Franc	8			8						97	93%	105	\$130,663
Cabernet Sauvignon	5,939			1,876	2,915	1,147	\$10,223,106	\$1,721	-2%	12,149	67%	18,088	\$31,134,843
Malbec	17				17					100	85%	117	\$230,987
Merlot	915			892	14	10	\$943,588	\$1,031	7%	2,374	72%	3,289	\$3,392,790
Petit Verdot	33		22	11						189	85%	222	\$118,026
Pinot Meunier										19	100%	19	\$28,980
Pinot Noir	82		15	67			\$77,792	\$948		224	73%	306	\$290,038
Shiraz	2,431			1,197	1,057	177	\$3,545,235	\$1,458	3%	7,847	76%	10,278	\$14,988,196
Tempranillo										2	100%	2	\$2,710
Other red	22			12	10					0	2%	22	\$29,171
Red Total	9,455		37	4,062	4,013	1,342	\$14,895,426	\$1,575	-6%	23,001	71%	32,455	\$50,362,543
White													
Chardonnay	864			864			\$675,906	\$782	10%	1,789	67%	2,654	\$2,075,004
Gewurztraminer										20	100%	20	\$16,562
Pinot Gris/Grigio										50	100%	50	\$59,262
Riesling	19			19						577	97%	596	\$506,360
Sauvignon Blanc	260		70	190			\$188,295	\$723	-13%	915	78%	1,175	\$849,840
Semillon	51		51							225	82%	276	\$152,020
Viognier										5	100%	5	\$7,030
Other white										10	100%	10	\$14,732
White Total	1,194		122	1,073			\$908,055	\$760	-2%	3,592	75%	4,787	\$3,680,811
Grand Total	10,649		159	5,135	4,013	1,342	\$15,803,481	\$1,484	-7%	26,593	71%	37,242	\$54,043,354

Note: Where there are fewer than three purchasers of a variety, the average price and total value are not reported to protect confidentiality.

Coonawarra

Historical weighted average price vs tonnes crushed



Coonawarra

Current plantings by variety and year planted

Variety	Year planted				Total area	% planted in 2018
	Pre-2016	2016	2017	2018		
Red winegrapes						
Cabernet Franc	20	1	1	0	22	0%
Cabernet Sauvignon	3567	3	14	10	3594	0%
Malbec	18	0	0	0	18	0%
Merlot	354	1	0	0	355	0%
Petit Verdot	17	0	0	0	17	0%
Pinot Noir	41	0	0	0	41	0%
Shiraz	1208	0	0	6	1214	0%
Other Red	7	0	3	2	12	15%
TOTAL RED WINEGRAPES	5232	5	18	18	5273	0%
White winegrapes						
Chardonnay	267	0	0	3	270	1%
Riesling	72	0	0	0	72	0%
Sauvignon Blanc	91	0	0	0	91	0%
Semillon	12	0	0	0	12	0%
Other White	8	0	0	0	8	0%
TOTAL WHITE WINEGRAPES	450	0	0	3	453	1%
TOTAL ALL VARIETIES	5682	5	18	21	5726	0%

Source: Vinehealth Australia

Explanations and definitions

AUSTRALIAN NATIONAL VINTAGE SURVEY

The information for this report has been collected and analysed by Wine Australia as part of the Australian National Vintage Survey. The SA Winegrape Crush Survey Report has been prepared by Wine Australia on behalf of the South Australian Wine Industry Association, Wine Grape Growers South Australia and Primary Industries and Regions SA.

Maps and planting data tables are provided by Vinehealth Australia (see notes on planting data tables).

The survey publication is available on Wine Australia's website wineaustralia.com, the Vinehealth Australia website vinehealth.com.au and via links from the Wine Grape Council SA website wgcsa.com.au and the South Australian Wine Industry Association website winesa.com.au

Photo credits

Cover image: Wine Australia
Current page: Ewen Bell / Wine Australia

Disclaimer

This information has been made available to assist on the understanding that Wine Australia is not rendering professional advice. Wine Australia does not accept responsibility for the results of any actions taken on the basis of the information contained in this report, nor for the accuracy, currency or completeness of any material contained in it. Wine Australia expressly disclaims all and any liability and responsibility to any person in respect of consequences of anything done in respect of reliance, whether wholly or in part, upon this report.

Note: data published in this report supercedes that in earlier reports. Minor variations in reported figures can occur due to data revisions.

Any questions about the report should be directed to:

Wine Australia Market Insights
+618 8228 2000
Market.insights@wineaustralia.com



Explanations and definitions - continued

INTAKE (CURRENT VINTAGE) DATA

Definition of regions

Regions have been defined in accordance with Geographical Indication (GI) boundaries. If a GI region has not been declared, or produces less than 5,000 tonnes, then the data is aggregated into the relevant GI zone. Disaggregation of data into smaller regions such as Southern Fleurieu and Mount Benson is available on request from Wine Australia.

Total crush

The total crushed is the total tonnes of grapes crushed from a particular source region, whether processed in that region, another region in SA or interstate. All wineries in Australia are included in the survey collection process. However, not all wineries respond to the survey - therefore the total tonnage reported may underestimate the true crush. It is estimated that the overall response rate for the survey is 88 per cent; however, individual regions may vary. Generally, regions will have a higher response rate when there is a high proportion of purchased winegrapes within the region.

Reported fruit is separated into fruit produced from the winery's own or associated vineyards ("own grown") and from independent vineyards ("purchased").

Calculated average purchase value

The survey requests wineries to provide the total amount paid for each parcel of fruit purchased (or the price per tonne). This is the price paid for fruit of a particular variety at the point of receipt – NOT including freight. It includes any penalties or bonuses (eg Baumé) applied at the weighbridge, but DOES NOT INCLUDE other bonuses or adjustments such as end use quality bonuses, which are not available at the time the survey is conducted (May-June 2019).

The calculated average purchase value per tonne is the average amount paid per tonne of fruit across all wineries.

Winery grown grapes are not included in the calculation of average purchase value; nor are grapes grown by companies connected with the winery or under lease arrangements.

Average and total purchase values are not reported where there are fewer than three purchasers of a variety in a particular region. However the values are included in the calculation of totals for each region.

Important note on average purchase value

There is considerable variation in the pricing arrangements made by different wineries. For example, some wineries make adjustment payments based on the average value per tonne reported in this survey and some pay quality bonuses based on the end use of the product. These additional payments are not included in the reported figures. The average price also does not give any indication of the distribution of prices, or variables that go into individual contracts.

Price dispersion data (shaded columns in Intake Summary tables)

All purchases for each variety are grouped into price segments according to the price paid for that batch of fruit. The sum of tonnes in all the price segments may not match the total tonnes purchased where there are tonnes reported without an associated price.

Estimated total value of all grapes

The estimated total value of all grapes is calculated by multiplying the average purchase value per tonne by all tonnes crushed. If there is a variety where there are no purchases, then the average purchase value for the same variety across similar regions, or across all other varieties of the same colour in the same region is used to determine an estimated value for the own grown grapes.

Explanations and definitions - continued

PLANTING DATA

Source of planting data tables

Planting data is not collected by the Australian National Vintage Survey. The information is obtained from the vineyard register maintained by Vinehealth Australia.

Vinehealth Australia is required under the *Phylloxera and Grape Industry Act 1995* to maintain a complete and accurate register of vineyard owners in the state. Vineyard owners with plantings of 0.5 hectares or more are required to register with Vinehealth Australia, and provide details of any changes made to these vineyard plantings within three months of any such change. This information is kept strictly confidential and provided for this survey in a deidentified and aggregated manner.

Explanatory notes for planting data tables

Regions are defined according to the Register of Australian Geographical Indications.

To protect confidentiality, the following rules are applied to reporting varieties:

- where there are fewer than 10 registered owners with plantings of a particular variety across the state, that variety is not separately identified in either the state or the regional reports but is grouped with “other red/white”, AND
- where there are fewer than three registered owners with a particular grape variety in a given region, that variety is not separately identified in the regional report but is grouped with “other red/white” unless it is a white variety listed in the top six, or red variety in the top five by planted area for the state for the current year.

- Planting data tables are current as at 30 April 2019 and include all plantings from the 2018-19 planting season.
- Reference to “other varieties” includes rootstock, multi-purpose and table-grape plantings.
- Vines planted in a particular year may include top-worked or replaced vines, as well as new plantings in virgin ground. Where vines have been replaced or topworked, the old variety record is removed. This explains why the area planted for earlier years may be different in the current report compared with previous reports.
- Where a zero (0) appears in a table, this may indicate the presence of a planting of less than 0.5 hectares, or it may indicate zero plantings. Rounding may produce slight discrepancies in totals.

For more information on the planting data in this report or about registration of vineyards, please contact the Vinehealth Australia office on (08) 8273 0550.