

Case study

Langhorne Creek Wine Region



LAKE BREEZE
LANGHORNE CREEK

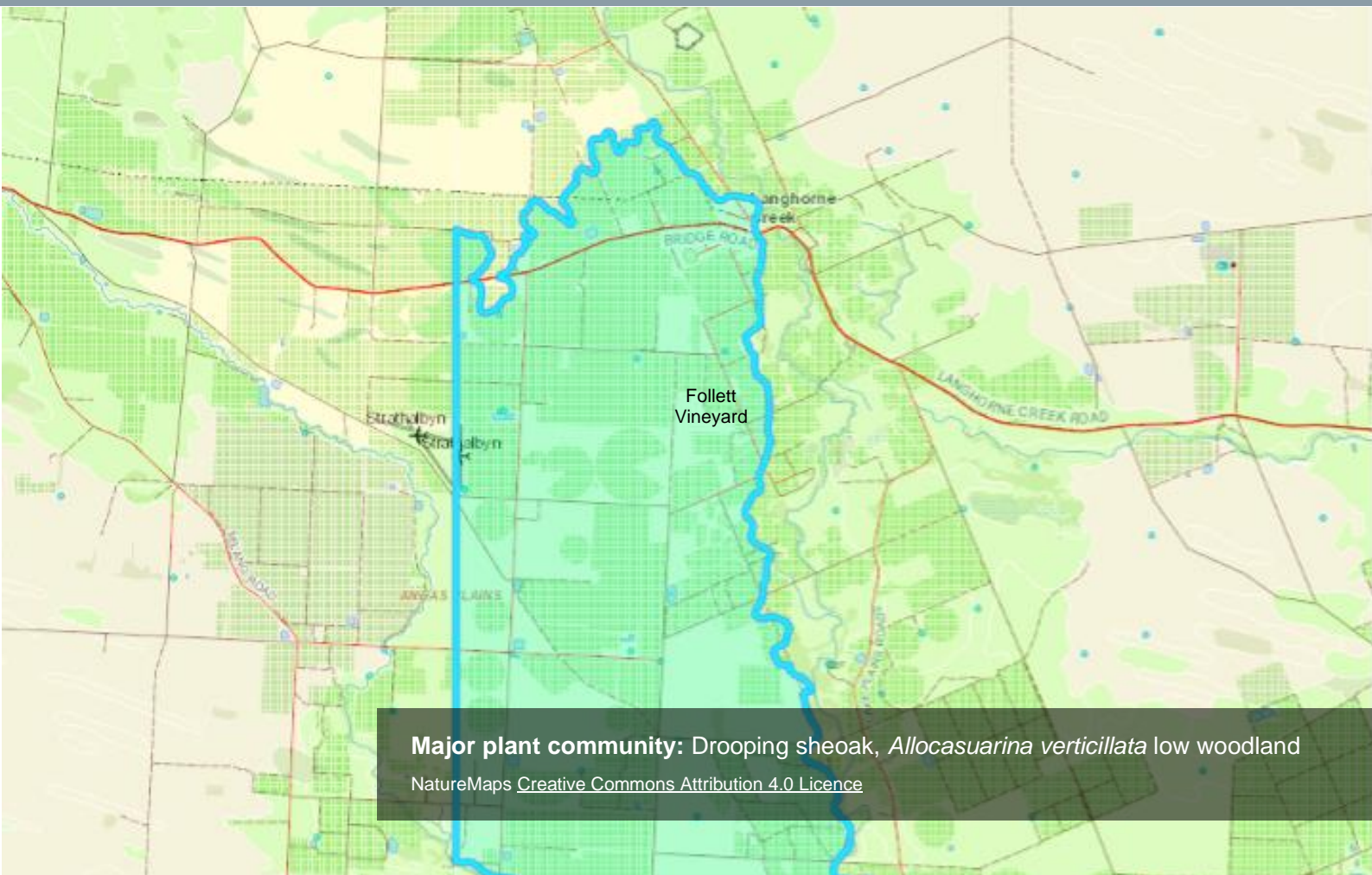
Lake Breeze Wines/Follett Vineyards, Langhorne Creek

EcoGrowers: Tim Follett

"Our Follett Vineyards EcoVineyards experience has been one of learning and growth of knowledge towards the benefits of sustainability in and around our vineyard. Overall, it's been a fun exercise that we are keen to continue, as we are seeing the benefits of more birds and insects already and are keen to see what can become of the area."



October 2023



Major plant community: Drooping sheoak, *Allocasuarina verticillata* low woodland

NatureMaps [Creative Commons Attribution 4.0 Licence](https://creativecommons.org/licenses/by/4.0/)

EcoGrower: Tim Follett, Lake Breeze Wines/Follett Vineyards

Langhorne Creek Wine Region

Case study

Pitfalls to avoid?

The guards, mulch, and irrigation in first year work well.

But when planting we could have spaced better to make the management easier as weed control is the biggest problem we encountered and still do.

Hopefully as trees become more established this problem will become easier to manage.



Progress (June 2021 to 2023):

What were you hoping to achieve and why?

Our project consisted of a triangular block of unused land amongst the vineyard with no substantial trees or shrubs around.

We were hoping to create an area where we could attract beneficial birds and insects and create an environment that could sustain a prolonged ecosystem into the future.

What did you do and when?

We planted an area around the edge of our block to create a border of larger trees followed by subsequent plantings of smaller trees and shrubs towards the middle leaving an open area in the middle where we hope to establish some native grass areas.

It was all planted in July 2021 and established with guards and a surround of mulch.

Then in November 2021 irrigation was set up to help get new plants through summer.

Where to from here?

One main thing for our project was trying to choose the best plants for the location as it can be affected by frosts and we found we had quite a few plants affected by this, but we found any plants that were more frost tolerant thrived in the red sandy soils.

We will now need to identify the plants that were better suited to area and try and find other plants that will add to and benefit the ecosystems that are already established.

I am learning more every time work on and look at the different aspects of our project but need to learn more about different species of trees and grasses that with work well in the area.

Photo left: Predator perch in action with a raptor bird using it as a vantage point to survey the surrounding area (Photo: Tim Follett).



Above: The vineyard area prior to planting (Photo: Mary Retallack).

Below: The insectary plants in their first year of growth (Photo: Tim Follett).



EcoGrowers: Tim Follett, Lake Breeze Wines/Follett Vineyards

Langhorne Creek Wine Region



Native plant list:

- *Acacia pycnantha*, golden wattle
- *Acacia verticillata*, prickly moses
- *Bursaria spinosa*, sweet bursaria
- *Acacia paradoxa*, prickly wattle
- *Leptospermum continentale*, prickly tea tree
- *Melaleuca brevifolia*, white flowering paperbark
- *Banksia marginata*, silver banksia
- *Goodenia amplexans*, clasping goodenia
- *Hakea rugosa*, erect dwarf hakea
- *Olearia ramulosa*, twiggy daisy bush
- *Eutaxia diffusa*, spreading diffusa
- *Poa poiformis*, tussock grass



Expenses (cash and in-kind)

Name: Tim Follett			Region: Langhorne Creek		
Date	Activity	Number items or plants	Grant cash expenses	Additional cash co-contribution	In-kind time captured
21/06/2021	Tube stock: State Flora, Belair (380 x \$2.95 ea)	380	\$1,121		
25/06/2021	Tube stock: Clayton Nursery (100 x \$2 ea)	100	\$200		
12/07/2021	Tree guards and stakes (500 guards and stakes x \$0.95 ea and \$0.40 ea)		\$670		
31/6/2021-11/11/2021	Planting time (3 people x 8 hours) guards mulch and Irrigation (3 people x 14 hours)		\$0		22 hrs
15/07/2021	Mulch 2 square meters,		\$75		
4/11/2021	Irrigation: Poly, parts, and drippers.		\$505		
4/11/2021	Slashing-Weeding etc (1 person 12Hrs)		\$350		12 hrs
15/11/2021	Irrigation: Poly, parts, and drippers.			\$370	
15/11/2021	Irrigation: Poly, parts, and drippers.			\$2,921	
22/06/2023	Arbor green. Tree guards, stakes, planting, and jute weed mat squares		\$824		
20/06/2023	Clayton Bay Nursery: plants	200	\$500		
				\$1,324	
TOTAL		680	\$4,245	\$4,615	34 hrs

Program partners



This project is supported by the Department of Agriculture, Water and the Environment, through funding from Australian Government's National Landcare Program.

Acknowledgement of country

The EcoVineyards program acknowledges Aboriginal people as the First Peoples and Nations of the lands and waters we live and work upon and we pay our respects to their Elders past, present, and emerging. We acknowledge and respect the deep spiritual connection and the relationship that Aboriginal and Torres Strait Islander people have to Country.

Disclaimer

The information contained in this case study is provided for information purposes only. The Wine Grape Council of South Australia and Retallack Viticulture Pty Ltd give no representations or warranties in relation to the content of this case study including without limitation that it is without error or is appropriate for any particular purpose. No person should act in reliance on this case study without first obtaining specific, independent professional advice having regard to their site(s). The Wine Grape Council of South Australia and Retallack Viticulture Pty Ltd accept no liability for any direct or indirect loss or damage of any nature suffered or incurred in reliance on the content of this case study.

For more info about the National EcoVineyards Program see <https://www.ecovineyards.com.au>

© Retallack Viticulture Pty Ltd