

WYNNS  
COONAWARRA ESTATE



## Coonawarra Wine Region

Case Study, July 2021

### Wynns Coonawarra Estate, Coonawarra, SA

**EcoGrower:** Nick Baverstock, Wynns Coonawarra Estate

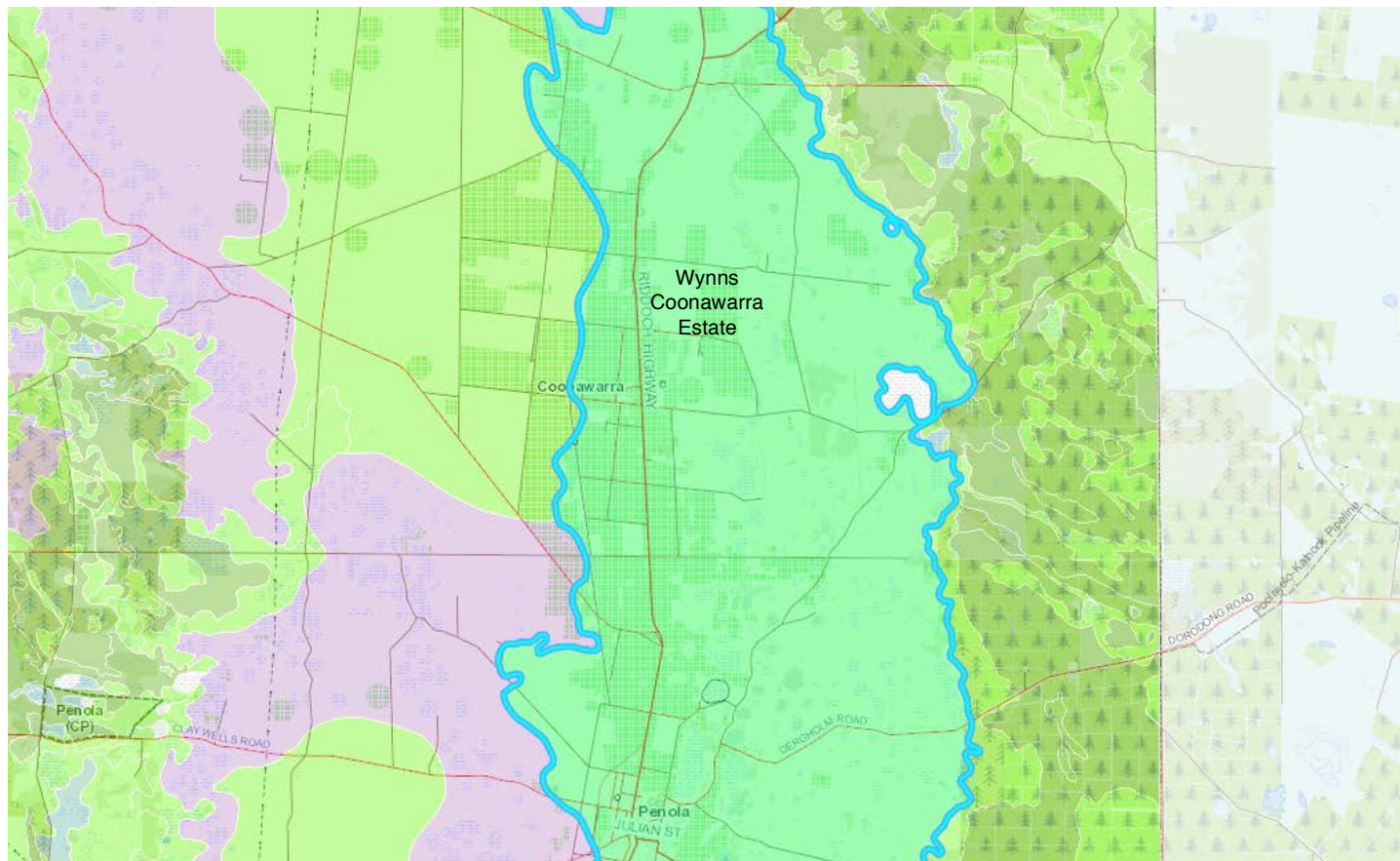
*"I have enjoyed being part of the EcoVineyards experience."*

*It was an opportunity to get familiar with plant species that grow well in my region and the benefit these species can have on the environment."*



#### Coonawarra Wine Region

**Plant community (marked in blue):** Red gum woodland over an open understorey of sedges, rushes, grasses and herbs.





## Case study

### What worked well?

- The planting worked well as the ground was sufficiently moist due to a wet spring in 2020.
- We slashed and kept the grass low before planting.
- Herbicide was applied post planting around the trees.
- All the species planted grew well.

### Pitfalls to avoid

- I planted the different tree species randomly which made it difficult to slash during spring and summer.
- I had to pay a contractor with a small slasher and tractor to slash the grass surrounding the new plants.

### Progress (June 2019 to 2021):

Revegetate 5 hectares of land within a new vineyard with a mixture of plant species that suit the site. The intention is to increase habitat for predatory birds and insects. Generally, increase biodiversity.

### What did you do and when?

We planted the trees, shrubs in September 2020.

### What are you more aware of now?

More aware of the species that suit my region/area.

### Where to from here (future plans)?

I plan to plant another 300 tree and shrub species to fill in the gaps not planted. This will be done in winter 2021.

### What has been the most valuable aspect of the program?

Obtaining a list of suitable species for our region through the EcoVineyards program.

Regular Check ins from Mary ensured I kept on top of the site and tried to ensure it was successful.

### Native plant list:

- *Acacia melanoxylon*, blackwood
- *Acacia myrtifolia*, myrtle wattle
- *Acacia pycnantha*, golden wattle
- *Allocasuarina luehmannii*, bull oak
- *Allocasuarina verticillata*, drooping sheoak
- *Banksia marginata*, silver banksia
- *Bursaria spinosa*, Christmas Bush or sweet bursaria
- *Callistemon rugulosus*, scarlet bottlebrush
- *Dianella revoluta*, black-anther flax-lily
- *Dodonaea viscosa*, sticky hop bush
- *Eucalyptus baxteri*, brown stringybark
- *Eucalyptus fasciculosa*, pink gum
- *Eucalyptus viminalis*, manna gum
- *Hakea nodosa*, yellow hakea
- *Leptospermum continentale*, prickly tea-tree
- *Melaleuca gibbosa*, slender honey myrtle
- *Melaleuca lanceolata*, dryland tea-tree
- *Rytidosperma* ssp., wallaby grasses



Pictures of the native insectary plantings at the new vineyard site (Photos: Mary Retallack).





**Native insectary planting:** 20 May 2021 (Photo: Mary Retallack)



**Native insectary planting:** 20 May 2021 (Photo: Mary Retallack)

*This project is supported by the Department of Agriculture, Water and the Environment through funding from Australian Government's National Landcare Program*



Wine Grape Council  
South Australia





## Expenses (cash and in-kind)

Name: Wynns Coonawarra Estate		Region: Coonawarra			
Date	Activity	Number of plants	Grant cash expenses	Additional cash co-contribution	In-kind time captured
17/06/2020	Tube stock from Eucaleuca Native Services	723	\$ 2,030.70		
17/06/2020	Corflute guards and hardwood stakes from Eucaleuca Native Services		\$ 1,654.30	\$ 2,240.60	
01/07/2021	Tube stock from Eucaleuca Native Services	150	\$ 315.00		
15/09/2020	Planting labour			\$ 3,297.60	90 hrs
<b>TOTAL</b>		<b>873</b>	<b>\$ 4,000.00</b>	<b>\$ 5,538.20</b>	<b>90 hrs</b>

Thank you to our project partners!



This project is supported by the Limestone Coast Landscape Board's Grassroots Grants Program and is funded by the landscape levy.

### Acknowledgement of country

The EcoVineyards project acknowledges Aboriginal people as the First Peoples and Nations of the lands and waters we live and work upon and we pay our respects to their Elders past, present and emerging. We acknowledge and respect the deep spiritual connection and the relationship that Aboriginal and Torres Strait Islander people have to Country.

The Bungandidj people are the traditional custodians of the Limestone Coast region and have an ongoing connection to the land.

### Disclaimer

Wine Grape Council of South Australia and Retallack Viticulture Pty Ltd do not warrant or make any representation regarding the use or results of use of the information contained herein as to its correctness, accuracy, currency, or otherwise. No person should act on the basis of the contents of this publication without first obtaining, specific, independent professional advice relevant to a particular site. Wine Grape Council of South Australia and Retallack Viticulture Pty Ltd will not be liable for any loss, damage, cost or expense incurred or arising by reason of any person using or relying on the information in this publication.

For more info about the EcoVineyards project see <https://www.wgcsa.com.au/ecovineyards.html>