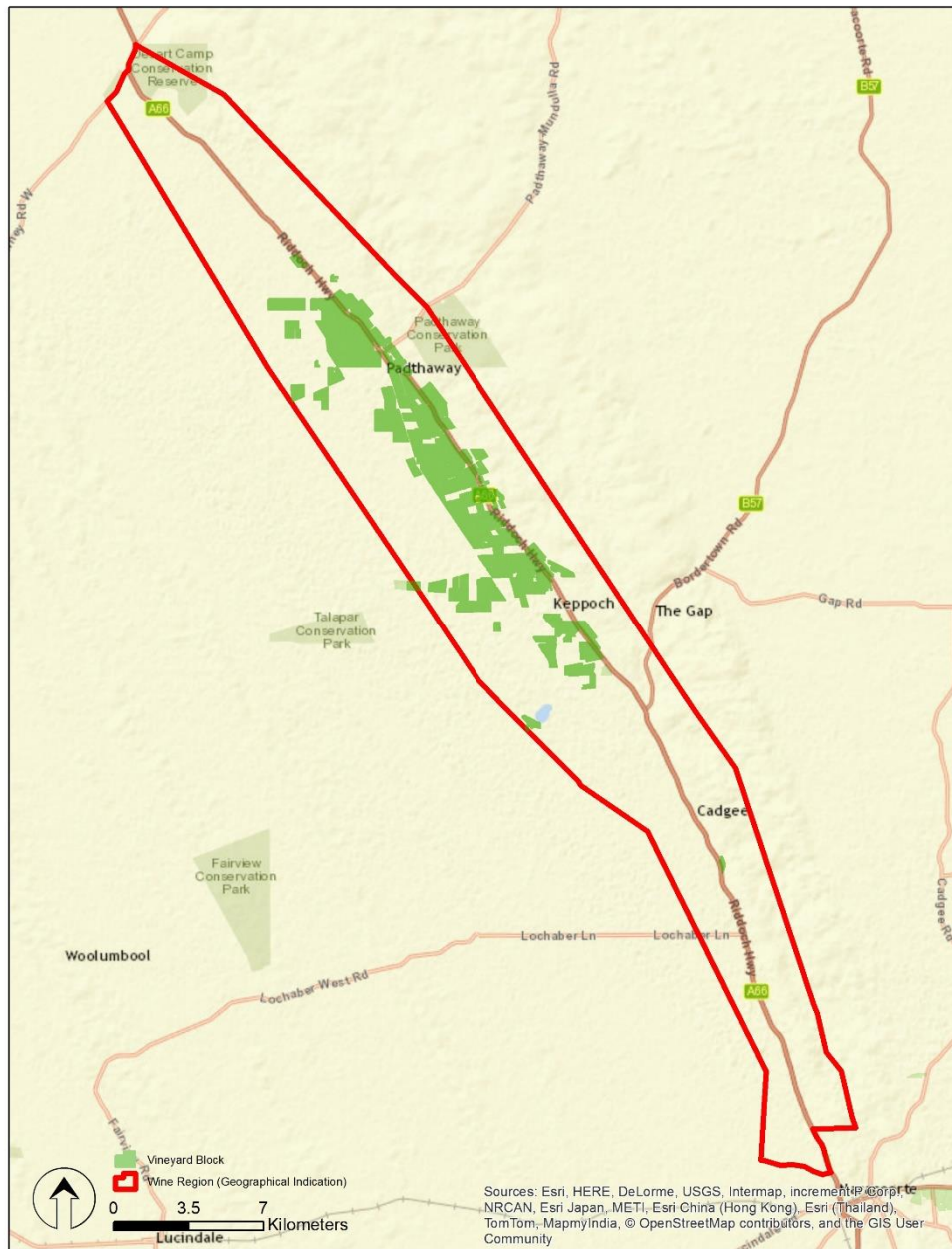


SA Winegrape Crush Survey

Regional Summary Report 2017

Padthaway Wine Region

Wine Australia July 2017



DATUM: GDA94
PROJECTION: MGA Zone 54
DATE: 8th March 2017
SOFTWARE: ESRI ArcGIS v10.4
DATA SOURCE:
Vineyard Block - Vinehealth Australia
Wine Region - Wine Australia

Padthaway Wine Region



DISCLAIMER: Although every effort has been made to ensure the accuracy of the information displayed, Vinehealth make no representations, either express or implied, that the information displayed is accurate or fit for any purpose and expressly disclaims all liability for loss or damage arising from reliance upon the information displayed.

Padthaway

Vintage overview

VINTAGE REPORT

The 2017 season started very well with a full soil moisture profile after receiving above average winter and spring rainfall. These conditions have not been seen in this area for many years. With local creeks and drains flowing for an extended period of time we are already witnessing the benefits of the natural recharge of the aquifer, which can only be a positive for the Padthaway region. During the growing season from September to April Padthaway received 459 mm of rain compared to 138 mm in Vintage 16 - this was 89% above the long term average.

The Padthaway summer was relatively mild compared to previous vintages with only two days of recorded temperatures above 40 degrees.

Bud-burst was very similar in timing to the previous year; however there were only 283 Growing Degree Days in 2016 compared to 507 for 2015. This may explain why flowering was considerably later this season.

The increased rainfall during the growing season meant growers had to apply additional preventative sprays compared to the drier and warmer conditions in Vintage 16.

The milder conditions during vintage slowed the ripening process; the harvesting of white varieties commenced at the end of February and continued through to the beginning of May for Cabernet Sauvignon.

Yields were average to above average and cooler conditions and rainfall events during vintage prolonged the harvest, putting pressure on growers.

Due to the varying weather conditions, some fruit was left on the vines; however the large majority was harvested with Chardonnay looking strong with natural acids and flavours along with solid parcels of Shiraz and Cabernet fruit coming from the earlier picks.

Andrew Bryson, President, Padthaway Grape Growers' Association

OVERVIEW OF VINTAGE STATISTICS

The harvest from the Padthaway region in 2017 was 41,142 tonnes down from 44,922 tonnes in 2016.

The five year average crush for Padthaway is 33,868 tonnes, making the 2017 harvest 21% above the average. The maximum crush in the past five years was 44,922 tonnes in 2016 and the smallest was 25,351 tonnes in 2015.

The total estimated value of grapes was down from \$38 million to \$36 million, reflecting the lower crush. There were mixed price results for the region's three major varieties. Shiraz declined by 4% to \$1,042 per tonne and Cabernet Sauvignon fell by 3% to \$1,032 per tonne. On the other hand, Chardonnay increased by 14% to \$602 per tonne.

The price dispersion data shows that 94% of red tonnages were purchased at between \$600 and \$1500 per tonne, while for the whites, 84% of purchases were also in the same price range.

There were 4 hectares of new plantings in Padthaway in 2016, with 3 hectares being Sauvignon Blanc. The total area planted in the region decreased by 140 hectares to 3849 ha, with most of the losses being Chardonnay.

Padthaway

Winegrape intake summary table

Variety	Tonnes purchased	E (less than \$300)	D (\$300- \$600)	C (\$600- \$1,500)	B (\$1,500- \$2,000)	A (above \$2000)	Total value purchased	Calc avg. purch value per tonnes	Change in price YoY	Winery grown fruit	Share of own grown	Total crushed	Est total value ALL grapes
Red													
Cabernet Franc	72											72	\$45,332
Cabernet Sauvignon	5799	0%	2%	97%		1%	\$5,982,546	\$1,032	-3%	1827	24%	7627	\$7,867,338
Malbec	125									509	80%	634	\$633,960
Merlot	1240		22%	78%			\$844,455	\$681	14%	627	34%	1867	\$1,271,814
Pinot Noir	1023			100%			\$813,937	\$796	-4%	247	19%	1270	\$1,010,794
Shiraz	7998		3%	94%	2%	1%	\$8,335,482	\$1,042	-4%	4272	35%	12269	\$12,787,546
Tempranillo	25											25	\$51,534
Other red										6	100%	6	\$6,009
Total red	16281	0%	4%	94%	1%	1%	\$16,197,936	\$995	-2%	7489	32%	23770	\$23,674,327
White													
Chardonnay	8523		42%	58%			\$5,129,883	\$602	14%	2549	23%	11071	\$6,663,884
Gewurztraminer	179									218	55%	398	\$274,503
Pinot Gris/Grigio	1983			100%			\$1,943,142	\$980	-2%	326	14%	2308	\$2,262,285
Riesling	322		12%	88%			\$293,735	\$913	-2%	1259	80%	1581	\$1,443,118
Sauvignon Blanc	1382		4%	96%			\$1,036,737	\$750	-5%	199	13%	1582	\$1,186,313
Verdelho										261	100%	261	\$179,746
Viognier	72			100%			\$72,430	\$1,000	0%	45	38%	117	\$116,960
Other white	43									11	21%	54	\$13,575
Total white	12504	0%	29%	70%			\$8,610,517	\$689	4%	4868	28%	17372	\$12,140,383
Total all varieties	28785	0%	15%	84%	0%	1%	\$24,808,453	\$862	1%	12356	30%	41142	\$35,814,710

Padthaway

Current plantings by variety and year planted

Variety	Current area in hectares				Total area	% planted in 2016
	Pre-2014	2014	2015	2016		
Red winegrapes						
Cabernet Franc	12	0	0	0	12	0%
Cabernet Sauvignon	876	51	4	0	931	0%
Malbec	78	0	0	0	78	0%
Merlot	179	0	0	0	179	0%
Other Red	8	0	0	2	9	17%
Pinot Noir	110	0	0	0	110	0%
Shiraz	1,179	0	12	0	1,191	0%
Total red varieties	2,441	51	15	2	2,509	0%
White winegrapes						
Chardonnay	879	0	0	0	879	0%
Other White	11	0	0	0	11	0%
Pinot Gris	151	0	0	0	151	0%
Riesling	148	0	0	0	148	0%
Sauvignon Blanc	80	0	0	3	83	3%
Semillon	10	0	0	0	10	0%
Traminer (Gewurztraminer)	21	0	0	0	21	0%
Verdelho	19	0	0	0	19	0%
Viognier	19	0	0	0	19	0%
Total white varieties	1,338	0	0	3	1,340	0%
Total all varieties	3,779	51	15	4	3,849	0%

Source: Vinehealth Australia

Explanations and definitions

INTAKE (CURRENT VINTAGE) DATA

Definition of regions

Regions have been defined in accordance with Geographical Indication (GI) boundaries. If a GI region has not been declared, or produces less than 5,000 tonnes, then the data is aggregated into the relevant GI zone. Disaggregation of data into smaller regions such as Southern Fleurieu and Mount Benson is available on request from Wine Australia.

Total crush

The total crushed is the total tonnes of grapes crushed from a particular source region, whether processed in that region, another region in SA or interstate. All wineries in Australia are included in the survey collection process. However, not all wineries respond to the survey - therefore the total tonnage reported may underestimate the true crush. It is estimated that the overall response rate for the survey is 88%; however, individual regions may vary. Generally, regions will have a higher response rate when there is a high proportion of purchased winegrapes within the region

Reported fruit is separated into fruit produced from the winery's own or associated vineyards ("own grown") and from independent vineyards ("purchased").

Calculated average purchase value

The survey requests wineries to provide the total amount paid for each parcel of fruit purchased (or the price per tonne). This is the price paid for fruit of a particular variety at the point of receipt – NOT including freight. It includes any penalties or bonuses (eg Baumé) applied at the weighbridge, but DOES NOT INCLUDE other bonuses or adjustments such as end use quality bonuses, which are not available at the time the survey is conducted (May 2017).

The calculated average purchase value per tonne is the average amount paid per tonne of fruit across all wineries.

Winery grown grapes are not included in the calculation of average purchase value; nor are grapes grown by companies connected with the winery or under lease arrangements.

Important note on average purchase value

There is considerable variation in the pricing arrangements made by different wineries. For example, some wineries make adjustment payments based on the average value per tonne reported in this survey and some pay quality bonuses based on the end use of the product. These additional payments are not included in the reported figures. The average price also does not give any indication of the distribution of prices, or variables that go into individual contracts. It should also be noted that in minor varieties there may sometimes be very few purchases contributing towards a calculated average purchase value.

Price dispersion data (shaded columns in Intake Summary tables)

All purchases for each variety are grouped into categories according to the price paid for that fruit. The tonnes in each category are converted into a percentage of the total tonnes purchased, giving an indication of what share of fruit was purchased in each price range category. The categories are given nominal titles of A to E for convenience but these do not correspond with grades used by any particular winery.

Estimated total value of all grapes

The estimated total value of all grapes is calculated by multiplying the average purchase value per tonne by all tonnes crushed. If there is a variety where there are no purchases, then the average purchase value across all other varieties of the same colour in the same region is used to determine an estimated value for the own grown grapes.

Explanations and definitions cont.d

PLANTING DATA

Source of planting data tables

Planting data is not collected by the 2017 Australian Wine Sector Survey. The information is obtained from the vineyard register maintained by Vinehealth Australia.

Vinehealth Australia is required under the *Phylloxera and Grape Industry Act 1995* to maintain a complete and accurate register of vineyard owners in the state. Vineyard owners with plantings of 0.5 hectares or more are required to register with Vinehealth Australia, and provide details of any changes made to these vineyard plantings within three months of any such change. This information is kept strictly confidential.

Vineyard plantings are recorded by Geographical Indication. Planting details for smaller regions not included in the survey report are available on request from Vinehealth Australia.

For more information on registration of vineyards, please contact the Vinehealth Australia office on (08) 8273 0550.

Explanatory notes for planting data tables

1. Planting data tables are current as at April 2017 and include all plantings from the 2016 planting season.
2. Vines planted in a particular year may include top-worked or replaced vines, as well as new plantings in virgin ground. Where vines have been replaced or topworked, the old variety record is removed. This explains why the area planted for earlier years may be different in the 2017 report compared with previous reports.
3. Where a zero (0) appears in a table, this may indicate the presence of a planting of less than 0.5 hectares, or it may indicate zero plantings. Rounding may produce slight variations between tables.

AUSTRALIAN WINE SECTOR SURVEY

The information for this report has been collected and analysed by Wine Australia as part of the Australian Wine Sector Survey. The SA Winegrape Crush Survey Report has been prepared by Wine Australia on behalf of the South Australian Wine Industry Association, Wine Grape Growers South Australia and Primary Industries and Regions SA.

Maps and planting data tables provided by Brendan Tully, Vinehealth Australia.

The survey publication is available on Wine Australia's website wineaustralia.com, the Vinehealth Australia website vinehealth.com.au and via links from the Wine Grape Council SA website wgcsa.com.au and the South Australian Wine Industry Association website winesa.com.au

Disclaimer

This information has been made available to assist on the understanding that Wine Australia is not rendering professional advice. Wine Australia does not accept responsibility for the results of any actions taken on the basis of the information contained in this report, nor for the accuracy, currency or completeness of any material contained in it. Wine Australia expressly disclaims all and any liability and responsibility to any person in respect of consequences of anything done in respect of reliance, whether wholly or in part, upon this report.

Any questions about the report should be directed to:

Wine Australia
+618 8228 2000
information@wineaustralia.com